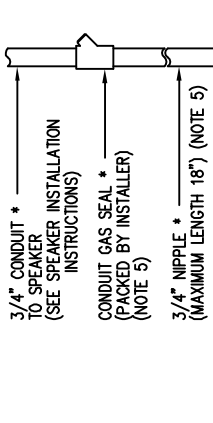
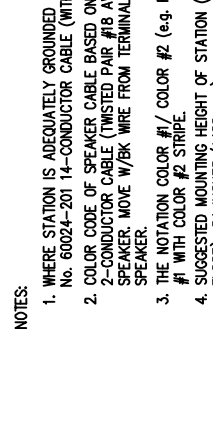
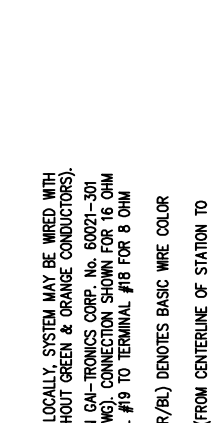
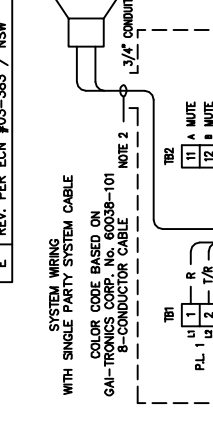


REVISION	
REV.	DESCRIPTION
C	PER ECN #86-319 / SMM
D	PER EN #91-480 / KPT / RLA
E	REV. PER ECN #03-383 / NSW

THIS DOCUMENT AND ITS CONTENTS ARE THE PROPERTY OF GAI-TRONICS CORPORATION (ETC.), AND SHALL NOT BE REPRODUCED, COPIED, EITHER WHOLLY OR IN PART, WITHOUT THE EXPRESS WRITTEN CONSENT OF ETC. DISCLOSE, DIRECTLY OR INDIRECTLY, IN WHOLE OR IN PART, THE DOCUMENT/CONTENTS TO ANY PERSON OR ENTITY, AND SHALL NOT USE, IN WHOLE OR IN PART, THE DOCUMENT/CONTENTS, EXCEPT STRICTLY AS AUTHORIZED BY ETC.



UNLESS OTHERWISE SPECIFIED DIMENSIONS ARE IN INCHES FRACTIONS DECIMALS ANGLES ± 1/64 .XX ± .02 .XXX ± .01

DO NOT SCALE DWG. APVD. RER. 3/11/83 SCALE SHEET 1 OF 1

- NOTES:
- WHERE STATION IS ADEQUATELY GROUNDED LOCALLY, SYSTEM MAY BE WIRED WITH No. 60024-201 14-CONDUCTOR CABLE (WITHOUT GREEN & ORANGE CONDUCTORS).
 - COLOR CODE OF SPEAKER CABLE BASED ON GAI-TRONICS CORP. No. 60021-301 2-CONDUCTOR CABLE (TWISTED PAIR #18 AWG). CONNECTION SHOWN FOR 16 OHM SPEAKER. MOVE W/BK WIRE FROM TERMINAL #19 TO TERMINAL #18 FOR 8 OHM SPEAKER.
 - THE NOTATION COLOR #1/ COLOR #2 (e.g. R/BL) DENOTES BASIC WIRE COLOR #1 WITH COLOR #2 STRIPE.
 - SUGGESTED MOUNTING HEIGHT OF STATION (FROM CENTERLINE OF STATION TO FLOOR): 54 INCHES (1400 mm).
 - EXTERNAL CONDUITS IN CLASS I; DIV. 1; GROUPS C & D AREAS TO HAVE GAS SEALS NOT MORE THAN 18 INCHES (457 mm) FROM STATION. EXTERNAL CONDUITS IN CLASS II AND CLASS III AREAS TO HAVE SEALS IF CONDUIT SYSTEM IS NOT DUST-TIGHT.
 - COMPONENTS USED TO FORM THIS STATION MAY BE REARRANGED BY INSTALLER FOR TOP ENTRY OF SYSTEM CONDUIT BY FOLLOWING THESE INSTRUCTIONS:
 - MOUNT REAR PART OF HOUSING INVERTED.
 - INVERT P.C.B. SUB-ASSEMBLY INSIDE REAR HOUSING TO RETURN IT TO PROPER ORIENTATION.
 - REPLACE FRONT COVER IN PROPER ORIENTATION.
 - THE No. 670-001 STATION SHOWN ON THIS DRAWING IS NRTL CERTIFIED FOR USE IN US AND CANADA FOR THE FOLLOWING HAZARDOUS AREA LOCATION:
 - CLASS I; DIV. 1; GROUPS C & D
 - CLASS II; DIV. 1; GROUPS E, F & G
 - CLASS III; DIV. 1
 - APPROVAL IS BASED ON INSTALLATION WITHOUT UNAUTHORIZED EQUIPMENT MODIFICATION AND IN ACCORDANCE WITH THIS DRAWING AND APPLICABLE NATIONAL ELECTRICAL CODE REQUIREMENTS.
 - CHANGES TO THIS DRAWING REQUIRE PRIOR NRTL APPROVAL.
 - STANDARD HOLE SIZE: 1 1/2" - 11 1/2 NPT
OPTIONAL HOLE SIZE: 2" - 11 1/2 NPT

INSTALLATION ACCESSORIES NOT SUPPLIED BY GAI-TRONICS CORP. BUT MUST MEET NATIONAL ELECTRIC CODE REQUIREMENTS. SMALLER CONDUIT SIZES MAY BE USED WITH REDUCERS IF WITHIN N.E.C. REQUIREMENTS.

UNLESS OTHERWISE SPECIFIED DIMENSIONS ARE IN INCHES FRACTIONS DECIMALS ANGLES ± 1/64 .XX ± .02 .XXX ± .01

DO NOT SCALE DWG. APVD. RER. 3/11/83 SCALE SHEET 1 OF 1

DWG NO. 70767
SHT. 1 OF 1
REV. E

GAI-TRONICS CORPORATION
READING, PA 19607
USA
No. 670-001
DIV.1 HAZ. AREA SPEAKER STA. 120 VAC
INSTALLATION DRAWING
SIZE F50M NO. C
DWG NO. 70767
REV. E

JOB DWG. No.
CONTRACT No.
APPROVALS
DATE
DRAWN SPG 12/14/83
ENGR. PMR 3/11/83
FINISH PMR
BER
DO NOT SCALE DWG. APVD. RER. 3/11/83 SCALE SHEET 1 OF 1

PUB. 42004-185A
INSTALLATION DRAWING

UNLESS OTHERWISE SPECIFIED DIMENSIONS ARE IN INCHES FRACTIONS DECIMALS ANGLES ± 1/64 .XX ± .02 .XXX ± .01

DO NOT SCALE DWG. APVD. RER. 3/11/83 SCALE SHEET 1 OF 1

UNLESS OTHERWISE SPECIFIED DIMENSIONS ARE IN INCHES FRACTIONS DECIMALS ANGLES ± 1/64 .XX ± .02 .XXX ± .01

DO NOT SCALE DWG. APVD. RER. 3/11/83 SCALE SHEET 1 OF 1

UNLESS OTHERWISE SPECIFIED DIMENSIONS ARE IN INCHES FRACTIONS DECIMALS ANGLES ± 1/64 .XX ± .02 .XXX ± .01

DO NOT SCALE DWG. APVD. RER. 3/11/83 SCALE SHEET 1 OF 1